

USB <-> UART

DRV8702D-Q1 / DRV8703D-Q1

DRIVE STAGE

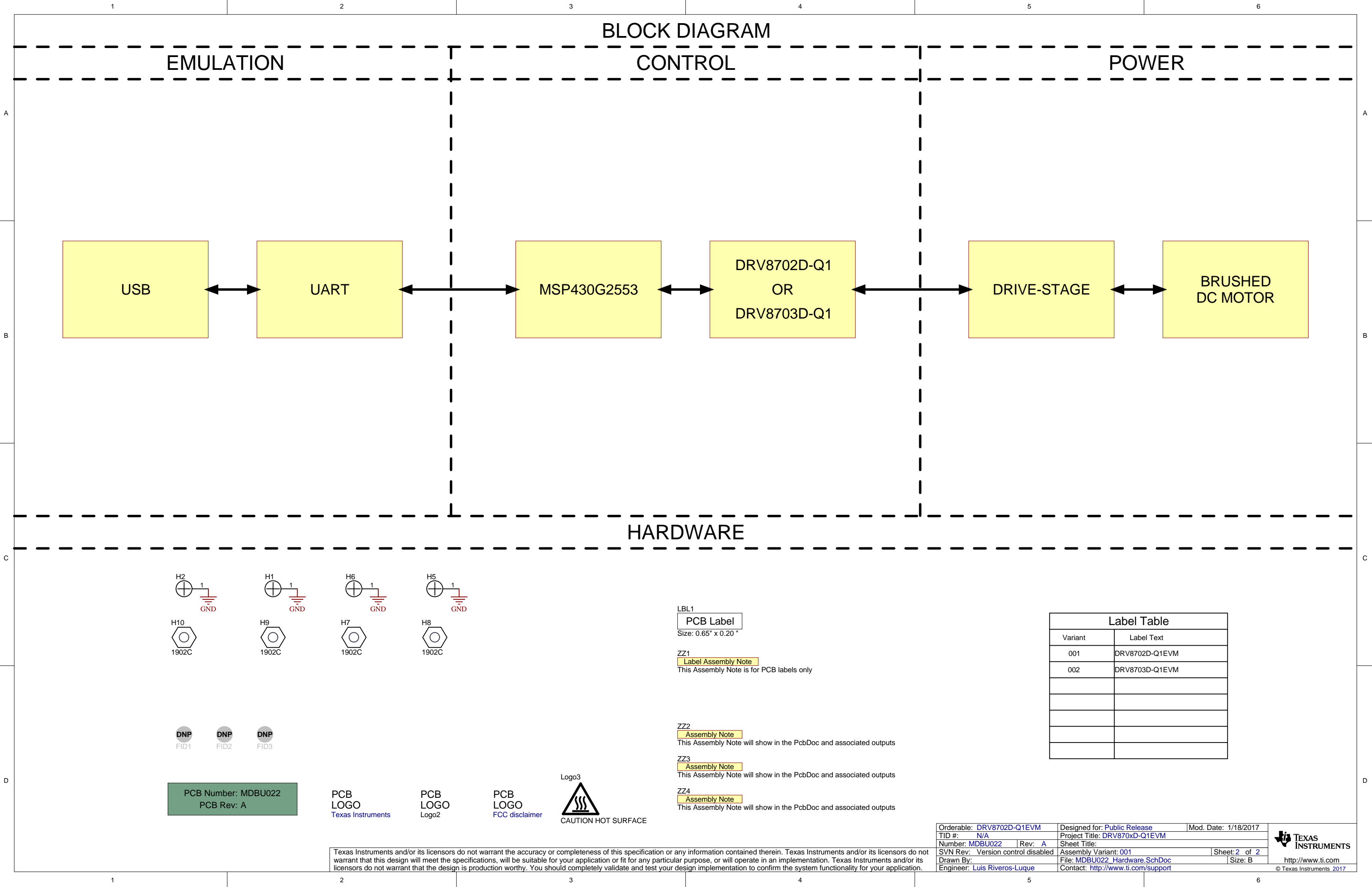
MSP430 & SPY-BI-WIRE

BUTTON & POT

LEDS

IDRIVE (DRV8702D-Q1)

3.3V LDO



H5

1

GND

H8

1902C

DNP

FID1

DNP

FID2

DNP

FID3

PCB Number: MDBU022

PCB Rev: A

PCB
LOGO

Texas Instruments

PCB
LOGO

Logo2

PCB
LOGO

FCC disclaimer

Logo3

CAUTION HOT SURFACE

LBL1

PCB Label

Size: 0.65" x 0.20 "

ZZ1

Label Assembly Note

This Assembly Note is for PCB labels only

ZZ2

Assembly Note

This Assembly Note will show in the PcbDoc and associated outputs

ZZ3

Assembly Note

This Assembly Note will show in the PcbDoc and associated outputs

ZZ4

Assembly Note

This Assembly Note will show in the PcbDoc and associated outputs

Label Table

Variant	Label Text
001	DRV8702D-Q1EVM
002	DRV8703D-Q1EVM

Orderable: DRV8702D-Q1EVM

TID #: N/A

Number: MDBU022

SVN Rev: Version control disabled

Drawn By:

Engineer: Luis Riveros-Luque

Designed for: Public Release

Project Title: DRV870xD-Q1EVM

Sheet Title:

Assembly Variant: 001

File: MDBU022_Hardware.SchDoc

Contact: http://www.ti.com/support

Mod. Date: 1/18/2017

Rev: A

Sheet: 2 of 2

Size: B

TEXAS INSTRUMENTS

http://www.ti.com

© Texas Instruments 2017

Texas Instruments and/or its licensors do not warrant the accuracy or completeness of this specification or any information contained therein. Texas Instruments and/or its licensors do not warrant that this design will meet the specifications, will be suitable for your application or fit for any particular purpose, or will operate in an implementation. Texas Instruments and/or its licensors do not warrant that the design is production worthy. You should completely validate and test your design implementation to confirm the system functionality for your application.